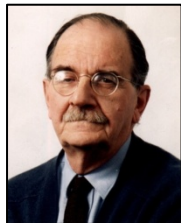


LEGENDS OF EARTHQUAKE ENGINEERING



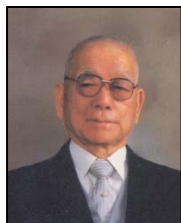
**NICHOLAS
AMBRASEYS**

Senior Research Fellow
Imperial College, London,
U.K.



TAKUJI KOBORI

(1920-2007)
Professor (Emeritus)
Kyoto University
Kajima Corporation



KIYOSHI MUTO

(1903-1989)
Professor (Emeritus)
University of Tokyo, Japan



THOMAS PAULAY

Professor (Emeritus)
University of Canterbury
New Zealand



RAY W. CLOUGH

Professor (Emeritus)
University of California,
Berkeley, USA



JAI KRISHNA

(1912-1999)
Formerly Vice-Chancellor
University of Roorkee
India



NATHAN M. NEWMARK

(1910-1981)
Professor (Emeritus)
University of Illinois at
Urbana-Champaign



JOSEPH PENZIEN

Professor (Emeritus)
University of California,
Berkeley, USA



H. BOLTON SEED

(1922-1989)
Professor
University of California,
Berkeley, USA



GEORGE W. HOUSNER

Professor (Emeritus)
California Institute of
Technology, USA



HUIXIAN LIU

(1912-1992)
Professor
Institute of Engineering
Mechanics, China



SHUNZO OKAMOTO

(1909-2004)
Professor (Emeritus)
University of Tokyo, Japan
Saitama University, Japan



EMILIO ROSENBLUETH

(1926-1994)
Professor (Emeritus)
National University of
Mexico