

Who We Are

The National Snow and Ice Data Center (NSIDC) archives and distributes digital and analog snow and ice data and information. Our data cover parameters such as snow cover, glaciers, ice sheets, freshwater ice, sea ice, permafrost, and ice cores. Researchers seeking data on these topics can find more than 500 data sets at NSIDC. We serve a worldwide audience.



NSIDC Library and Information Center

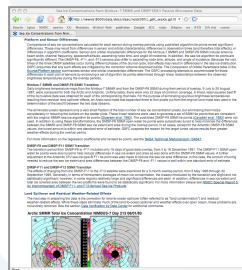
library@nsidc.org

<http://nsidc.org/noaa/library/>

Open to the public, our library is a unique resource for research on the cryosphere:

- > 44,000 published and unpublished materials on the cryosphere
- > 100 periodicals and newsletters on the cryosphere and remote sensing of ice and snow

Please stop by!



The NSIDC Web site

<http://nsidc.org/>

Our Web site offers extensive data access, resources and information. Find technical documentation for hundreds of data sets, compiled by our product teams and technical writers.

User Services Office

nsidc@nsidc.org

Real people who provide timely, professional, and knowledgeable assistance:

- > End-to-end product support
- > Expert assistance in selecting and obtaining data
- > Online data order and access
- > Referrals to other data resources
- > Hands-on training and assistance
- > Expertise in earth science, remote sensing, data manipulation, and programming
- > Support for data-handling and visualization tools
- > We average 350 data orders and information requests handled per month



Our Role

The NSIDC Science Communications Group helps support the science community by providing and maintaining NSIDC's public interface. We are individuals with specialized skills and roles who are integral members of NSIDC product teams, representing user needs. We help make NSIDC data and services easier to obtain and use.

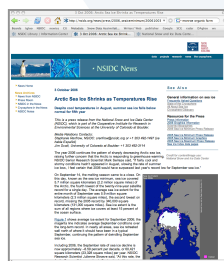
Expertise

- > Data set knowledge
- > Data software and tools knowledge
- > Scientific knowledge
- > Technical and specialized writing skills
- > Web page design and information architecture
- > Graphic design and print production
- > Press communications
- > Library and reference services
- > Archives management
- > Outreach and education

Press Room

<http://nsidc.org/news/press/>

We help our researchers communicate important scientific developments to the press, and in turn help the press obtain the most accurate science for their stories.



Education Center

<http://nsidc.org/cryosphere/>

Scientifically accurate information presented for the general public and educators:

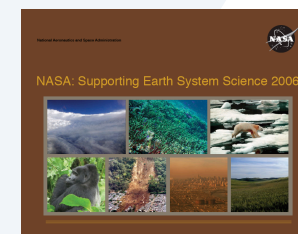
- > State of the Cryosphere
- > All About Snow
- > All About Glaciers
- > About Sea Ice
- > Studying the Cryosphere
- > Arctic Meteorology Primer
- > Cryosphere Glossary



NASA Supporting Earth Systems Science and Web site

<http://nasadaacs.eos.nasa.gov/>

We research, write, and publish feature stories about intriguing research applications of NASA EOSDIS data.



The Team

Jane Beitler
Lynn French
Gloria Hicks
Allama Howard
Lindsay Husted
Dave Kern
Amanda Leon
Molly McAllister
Deann Miller
Laura Naranjo
Stephanie Renfrow
Donna Scott
Michon Scott
Betsy Sheffield
Stephen Truex



We produced this full-size poster for the International Polar Year. Projects such as this help promote the value of satellite data and cryospheric science to audiences in schools, libraries, and science organizations all over the world.