

REGIONAL ATMOSPHERIC PROFILING CENTER FOR DISCOVERY (RAPCD)

Michael J. Newchurch

David A. Bowdle

University of Alabama in Huntsville

Presented at Working Group Meeting for Satellite Lidar Winds

Bartlett, New Hampshire

July 15-18, 2002

<http://vortex.nsstc.uah.edu/atmchem/rapcd/rapcd.html>

RAPCD Lidar Lab - View from Southwest



Schematic: benches, chimneys, and cabinets now installed

RAPCD Lidar Lab - View from Northeast



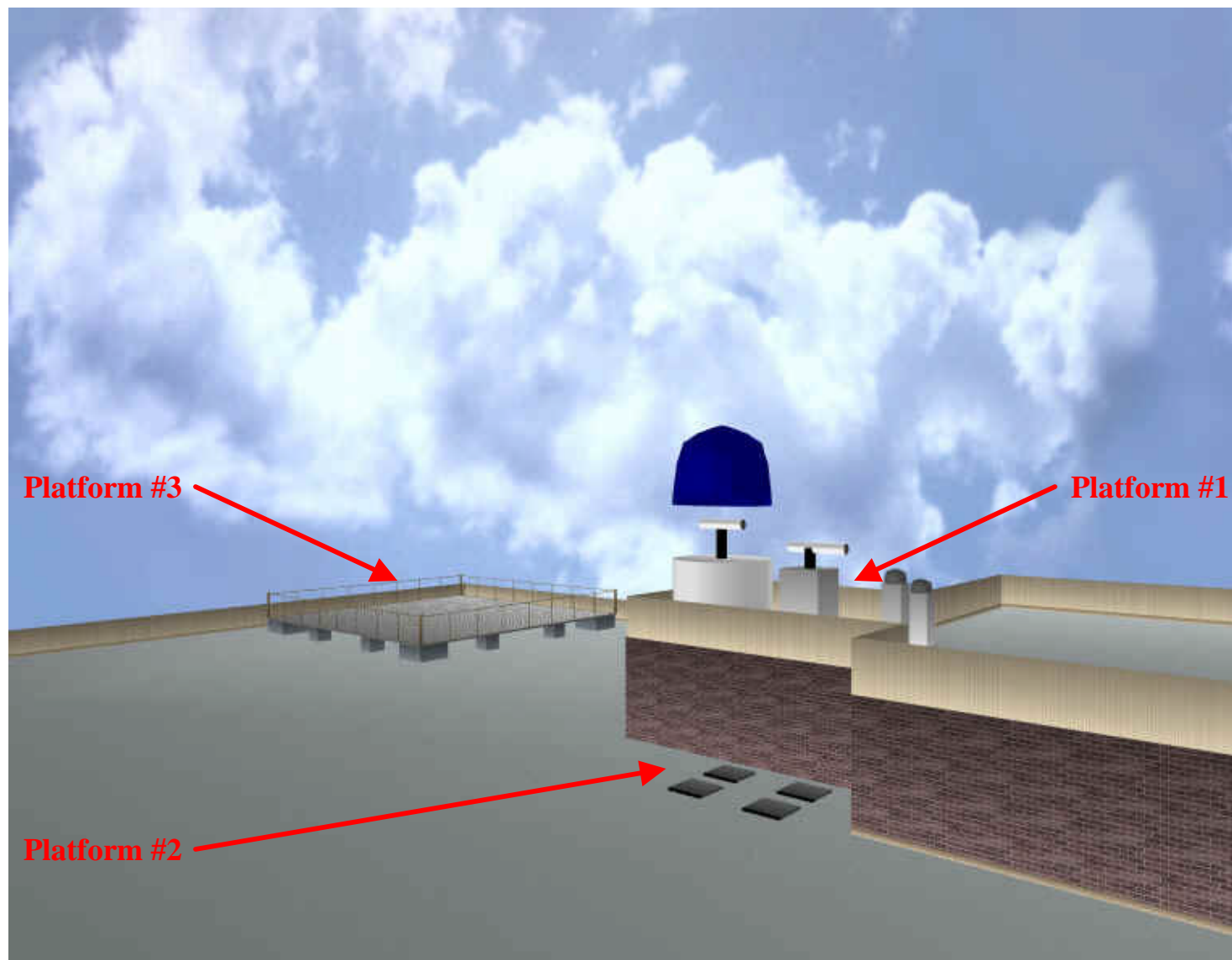
Schematic: benches, chimneys, and cabinets now installed

RAPCD FTIR Lab - View from Southeast



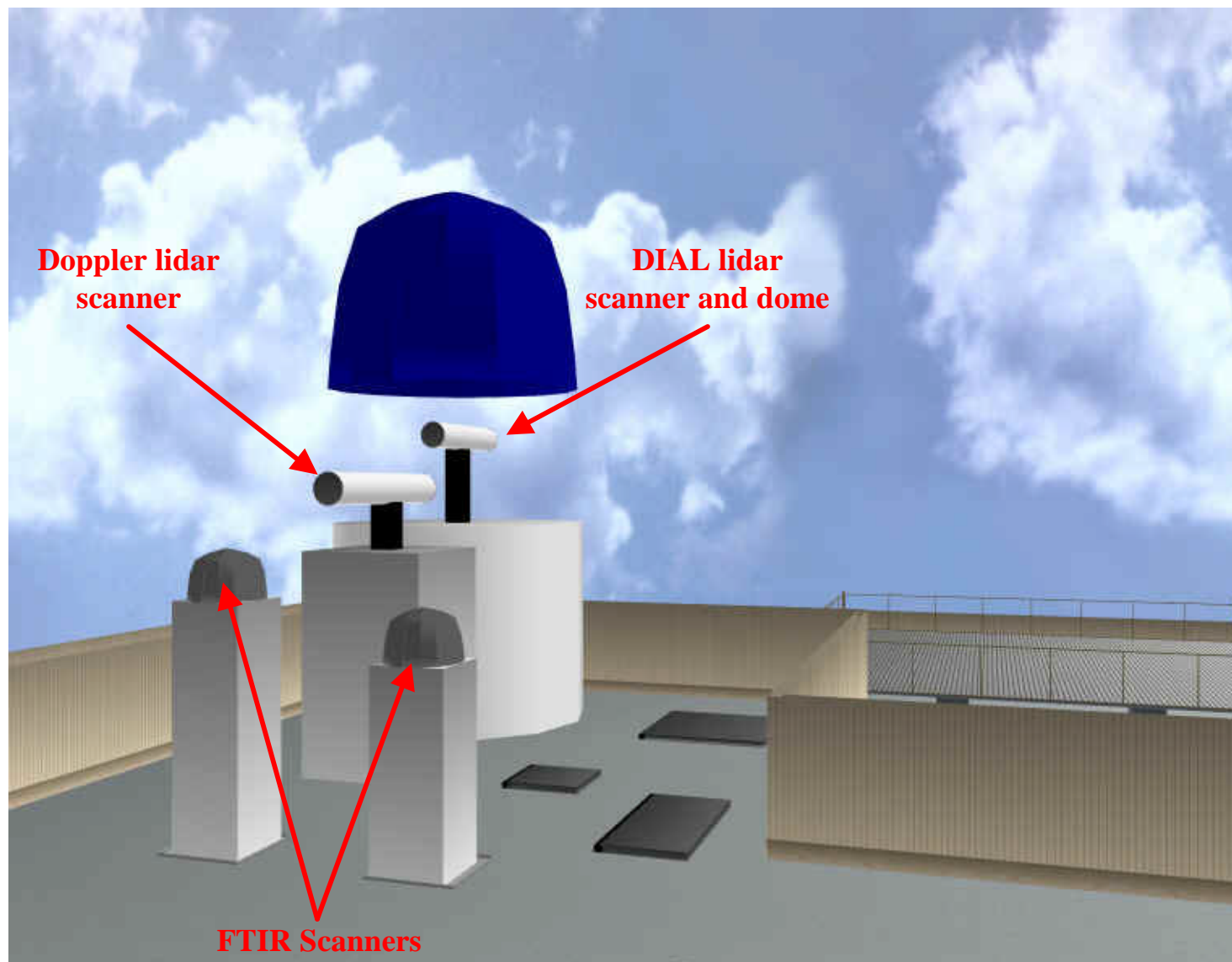
Schematic: benches and cabinets now installed

RAPCD Rooftop - View from Southwest



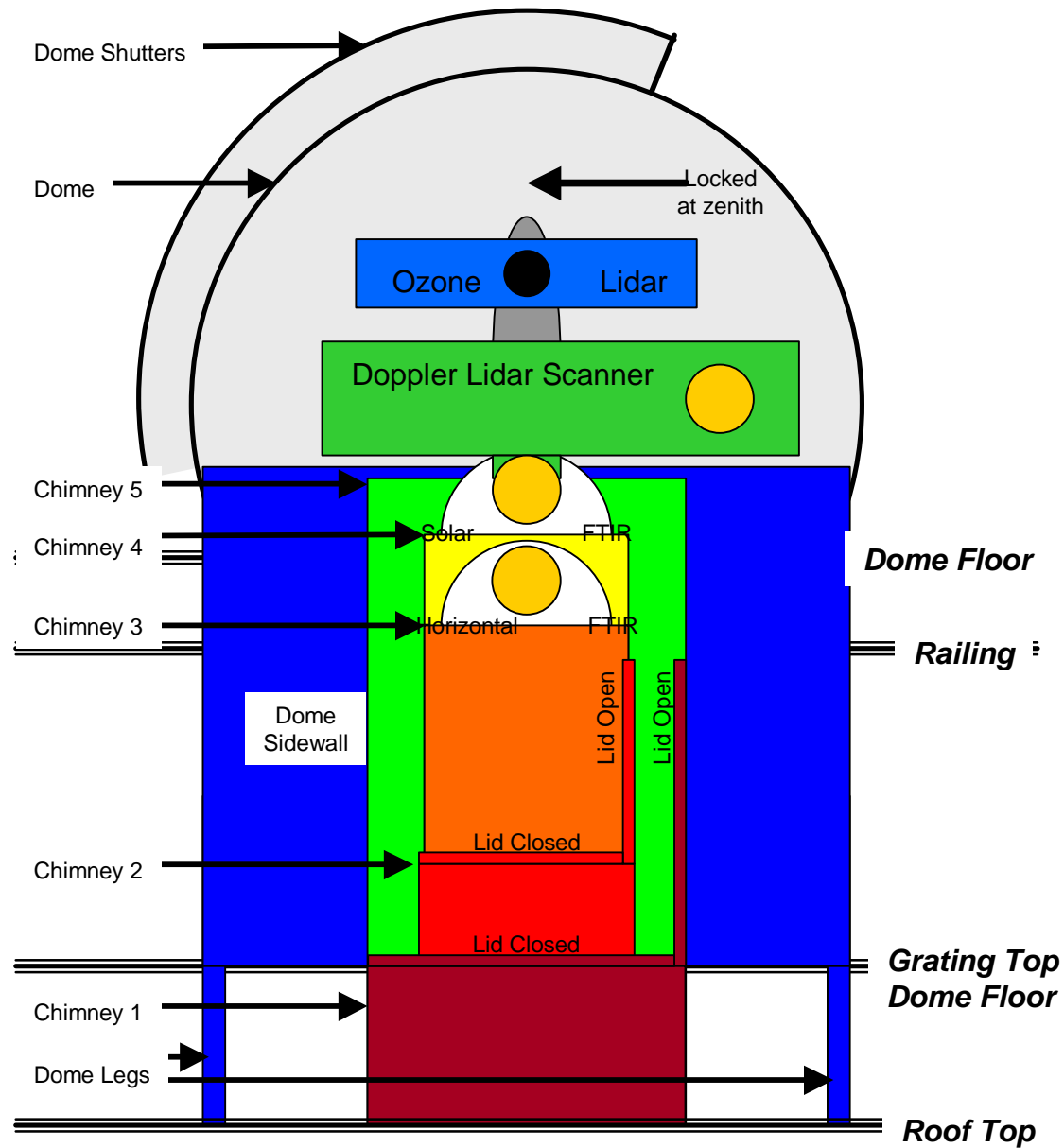
Schematic: platforms and chimneys now installed

RAPCD Platform #1 - View from Southeast

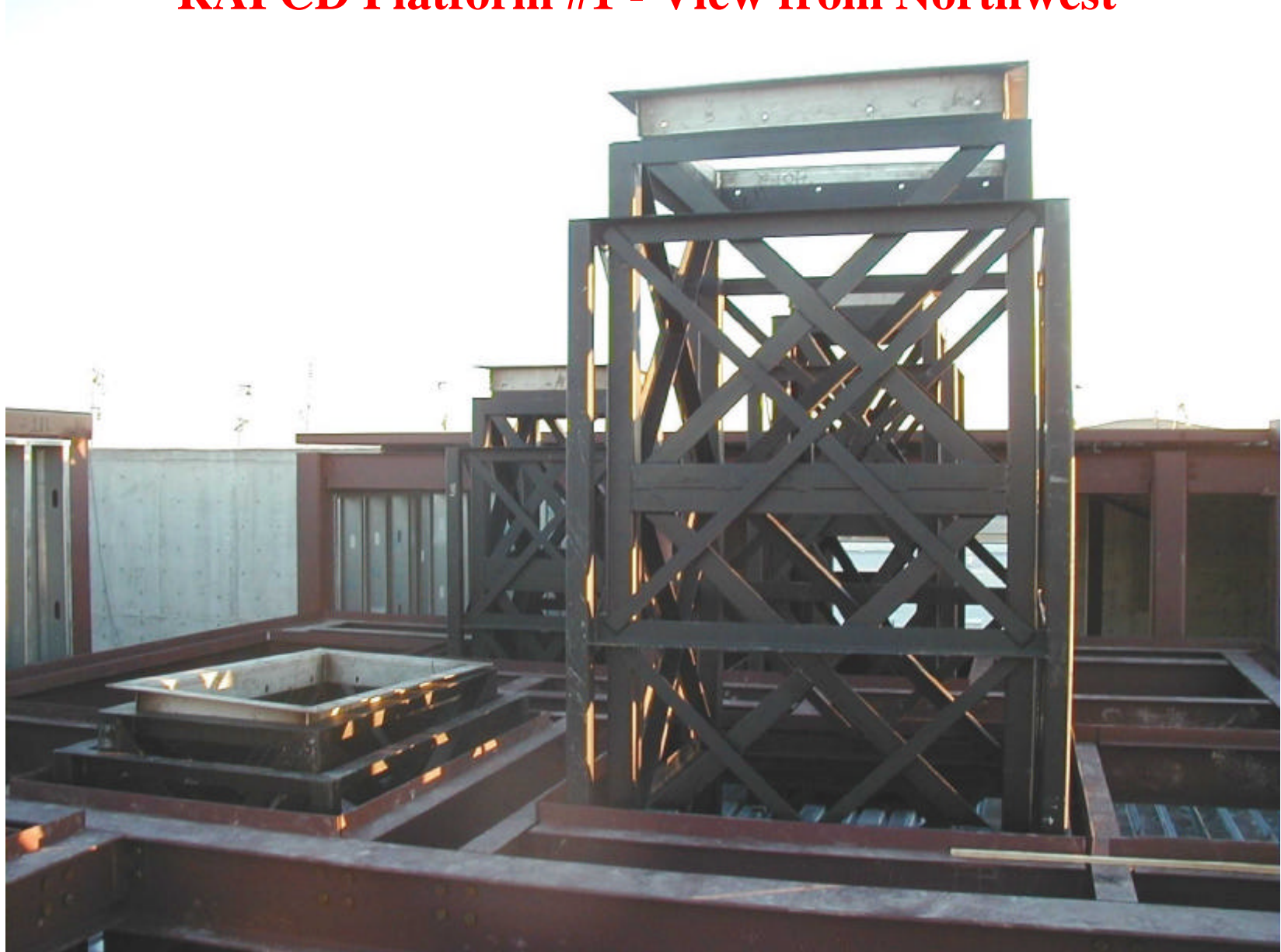


Schematic: platform and chimneys now installed; dome and scanners not present

RAPCD LINE OF SIGHT PLATFORM #1 SCHEMATIC

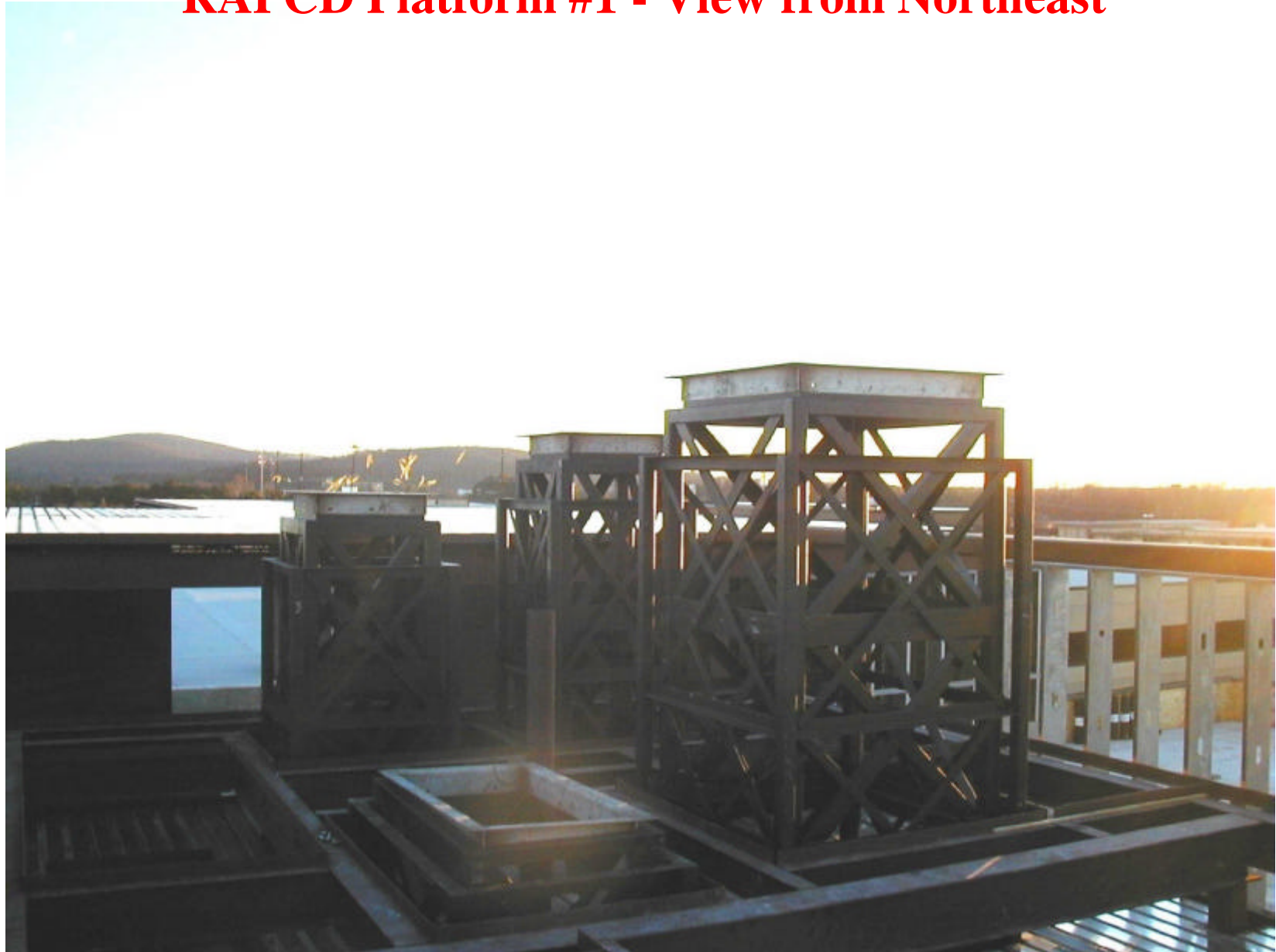


RAPCD Platform #1 - View from Northwest



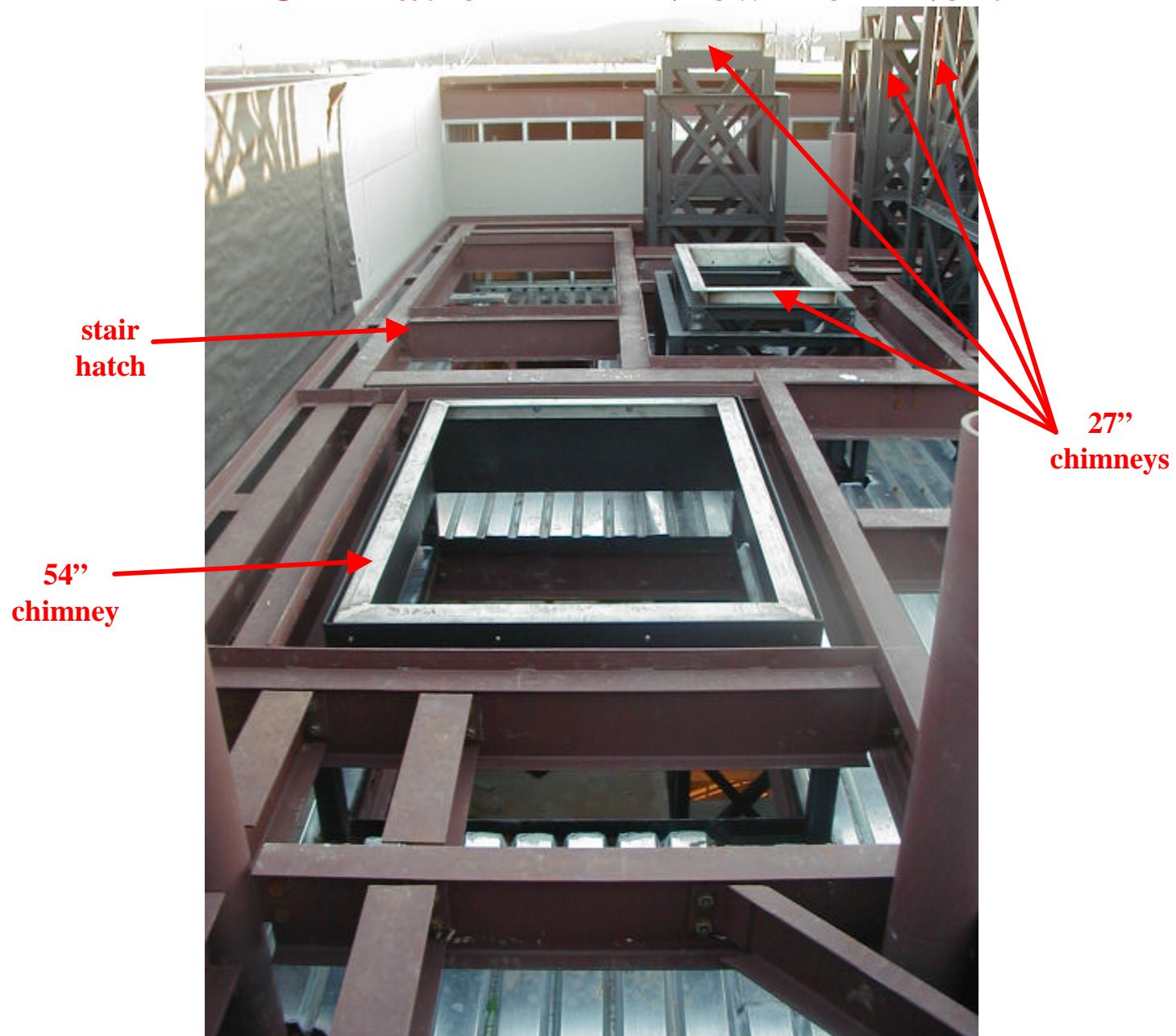
Construction Phase, showing steel vibration isolation cores: siding and hatches now installed

RAPCD Platform #1 - View from Northeast



Construction Phase, showing steel vibration isolation cores: siding and hatches now installed

RAPCD Platform #1 - View from North



Construction Phase, showing steel vibration isolation cores: siding and hatches now installed

RAPCD Platform #1 - View from Northeast



Construction Phase, showing steel vibration isolation cores: siding and hatches now installed

RAPCD Platform #1 - ObservaDome Piers - View from Southwest



Construction Phase, showing dome base and vibration isolation piers; Dome not yet present

RAPCD Platform #3 - View from Southwest



Construction Phase: power and data now installed

RAPCD CONSTRUCTION SUMMARY

as of July 12, 2002

Infrastructure to be Provided

- **Labs** – Base Bid functionality
- **Conduits** – Base Bid functionality, rough-in for enhanced power and data
- **Chimneys** – enlarged, with conduits and vibration isolation towers
- **Platforms** – enlarged, with Base Bid power and data
- **Dome** – foundation, with vibration isolation piers
- **Lightning** – lightning protection system: status tentative

Infrastructure Completed to Date

- **Basic structure, roof penetrations**
- **Platforms, chimneys, hatch lids, ladder**
- **Utilities and conduits almost complete**
- **Casework installation almost complete**

Infrastructure Pending

- **Ceilings, optical curtains, snorkels**
- **Utility bars over optical benches**
- **Floor, wall, and door finishing**
- **Optical benches (now on site)**

Infrastructure not to be Provided

- **Labs** – automatic laser interlocks, integrated superstructures
- **Platforms** – enhanced power, data, floodlights, closed circuit cameras
- **Dome** – 3-meter ObservaDome, with associated power, data, and accessories

Update September 10: All major pending infrastructure installed; occupancy imminent