



CIEMAT
Madrid, SPAIN
Atmospheric Pollution Uni

Dr. Begoña Artíñano
Dr. Manuel Pujadas
Dr. Javier Plaza
Dr. Francisco J. Gómez Moreno
Dr. Esther Coz
Ms. M^a Aranzazu Revuelta

Second Science Meeting
CSIC-IJA, Barcelona

Contribution to DAURE- 2009



Inorganic aerosol at BCN site

Semi-continuous measurements (10 min)

Size segregated measurements and chemical analysis

Individual Particle Analysis (SEM/EDS)

Size distribution and number at MSY site (SMPS)

Inorganic aerosol - BCN site

Semi-continuous measurements (10 min)

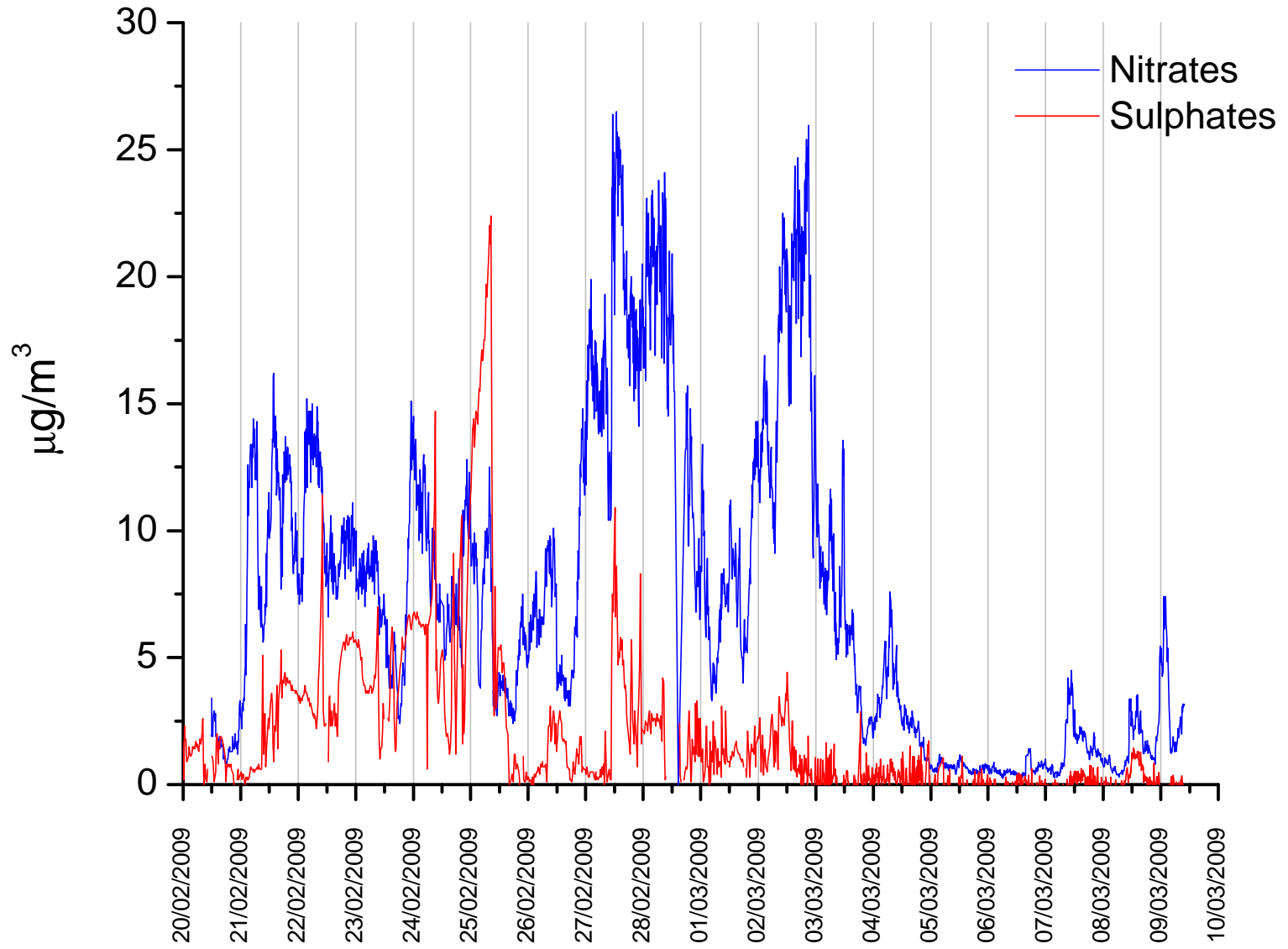
Daily evolution pattern of sulfate (PM1) and nitrate (PM2.5)



- Particulate nitrate analyser (R&P8400N)

- Particulate sulfate analyser (Thermo 5020i SPA)

First results



Size segregated measurements and chemical analysis

Cascade impactor: MOUDI



- 12 hour sampling schedule
- Starting the 24th Feb night
- Until now 26 samples (13 days)
- 4 more days in BCN
- 4 possible days in Montseny

+ Half of the samples from CEH will be analyzed for NH_3 and HNO_3 at the CIEMAT facilities in Madrid.

Individual Particle Analysis (SEM/EDS)

In collaboration with RJ Lee Group, Inc.

Sierra-Andersen impactor
used as a PM_{2.5} cut-off



BCN2 - 3 sampling days

Four times/day:

8-10 am, 12-2 pm, 4-6 pm, 8-10
pm, (12 samples)

MSY2 – 1 sampling, pending

Size number distribution at MSY site



The SMPS was installed last Friday and it is currently measuring.